



Dear parent and carers,

As promised, I am writing with additional information about the return of students to our school. First, a reminder about the dates for our phased return.

Commencing 25 October (Week 4)	<ul style="list-style-type: none"> • Early childhood centres (ECEC) • Preschool and kindergarten • Years 1 and 2 • Year 6 • Years 9 and 10 • Out of school hours care (OSHC)
Commencing 1 November (Week 5)	<ul style="list-style-type: none"> • Years 3, 4 and 5 • Years 7 and 8
<i>From weeks 1 to 4 of term, onsite supervision and care continues to be available for vulnerable children and young people whose parents are essential workers.</i>	

Drawing on national and local health advice we have developed a return to school plan which has three key priorities:

- the health and safety of staff and young people,
- the mental and emotional well-being of students and staff, and
- ensuring continuity of learning.

Below is an outline of [ACT Health Guidelines](#) that schools are required to implement to ensure effective COVID-19 measures are in place.

Use of Check in CBR app	All staff and visitors must check in using the 'Check in CBR' app. Parents and carers cannot enter school grounds except for an essential reason. Visitors must call to make an appointment, or in advance of attendance. All visitors must report to the front office.
Student illness	Staff and students who are unwell are not able to attend school. Students who present unwell will be required to go home.
Hygiene	Schools will maintain and promote appropriate hand hygiene and respiratory hygiene practices. Students will need to wash hands and use hand sanitisers throughout the day. Students will not be allowed to share food or drink.

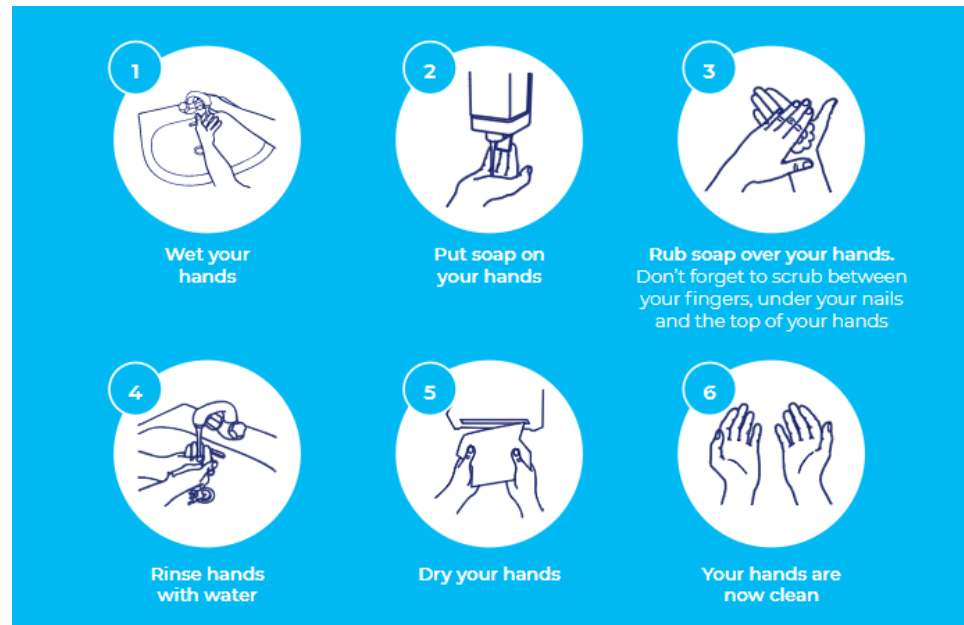
Masks	<p>Staff, visitors, and students* in years 7-12 must wear a face mask on campus. Students in years 3-6 are encouraged to wear a mask if they are comfortable doing so. Students in Preschool to year 2 are not required to wear a mask. Masks may not be suitable for students with a disability or medical condition and schools will make allowances for those students not to wear masks.</p> <p><i>* Students will be required to wear their personal masks. Masks will be available at school for those who require them. Disposable masks need to be changed every four hours.</i></p>
Physical Distancing	<p>Physical distancing between children and young people is not always possible, particularly in single classrooms and school environments. It is however important for limiting the transmission of COVID-19. To promote physical distancing we may adjust learning programs, breaktimes, our timetable as well as pick up and drop off arrangements. More specific information about what this means for your child is included below.</p>
Environmental cleaning	<p>Our school cleaning program includes regular cleaning of high touch services, frequently used objects, and play equipment.</p>
Ventilation	<p>All schools have been assessed to increase fresh air circulation and this may involve changes to ventilation, modified HVAC system settings and maximising the use of outdoor learning spaces.</p>
Managing suspected cases	<p>We are prepared to respond to a positive COVID-19 case on campus, should the need arise. ACT Health will provide direction to the school and community, which may result in a full or partial school closure. A student who presents with symptoms of COVID-19 will be isolated with suitable supervision, and parents will be required to collect their child. Symptomatic students will be required to wear a mask.</p>
Will schools have routine testing for COVID-19?	<p>Anyone with COVID-19 symptoms should get tested immediately. ACT Health is not recommending routine COVID-19 testing of children, young people or staff using rapid antigen testing.</p>
Wellbeing supports	<p>Wellbeing and learning supports, such as face to face appointments with the school psychologist or access to a Learning Support Assistant, will recommence with the return to school.</p> <p>For parents and carers of students with a medical vulnerability: if you wish the school to make reasonable adjustments for the safe return of your child, you must consult a GP and provide medical advice to that effect. Where adjustments can't be made, the school will support your child to learn from home.</p>

Lyneham Primary School Staff are looking forward to welcoming all our students back on site. We have spent considerable time planning for the return, and we thank you for your patience while we support our community during this time.

To further support the ACT Health Guidelines our school is making the following adjustments:

<p>Drop off and pick up</p>	<p>To ensure that safety of staff and students, please be aware of drop off and pick up changes for Lyneham Primary.</p> <p>Kindergarten- Students will enter and leave each day through the Kindy playground courtyard gate and assemble outside the rooms in the covered area. This courtyard is accessed from the front of the school on Brigalow Street.</p> <p>Year 1 and 2- Enter and leave through the gate from the oval onto the Junior playground. Students will assemble in their usual line up area.</p> <p>Year 3 and 4- Enter and leave through the gate from the oval which is closest to the hall. Students will assemble on the Senior playground.</p> <p>Year 5 and 6- Enter and exit through the gate near the shops leading to the grassed area outside the library. This gate is accessed from Hall Street. Students will wait in this area until 9.00am where they will line up ready to go inside with their teacher.</p> <p>Preschool- Students and parents will line up outside the gate where a sanitising station will be set up. Parents are encouraged to help their child to sanitise their hands. Please do not enter the playground or the building. Parents will wait outside the gate at pick up time and the educators will send their children out of the playground.</p> <p>Additional Information:</p> <ul style="list-style-type: none"> • Please drop your child/children off at school as close to 9.00am as possible. • Hand sanitiser will be placed at each entrance and a Learning Support Assistant will support this each morning. • Parents waiting to pick up students must also remain socially distanced. • Parents and carers cannot enter school grounds except for an essential reason. Please ring the front office on 6142 1720 to discuss any requirements. Meetings with staff will be held online. • Siblings – in the instance of siblings, students will be asked to exit through the nominated gate to meet younger siblings - we suggest your family identify a new meeting point for pickup to assist with multi-age pickups • Students who catch the Bus will exit the school via the Front Office <p>Please see the attached map for further information.</p>
<p>Hygiene routines</p>	<p>Each classroom will have hand sanitizer available, and students will be asked to sanitize when entering and exiting the classroom. Cohorts have been identified to use specific toilets.</p>

We will explicitly teach students the handwashing protocol. We welcome parents to reinforce this messaging for home.



Teaching and learning

Classes will remain in their own area or corridor throughout the day. Only teachers, support staff and specialist teachers assigned to those classes will supervise the students to limit the amount of movement across the school. Classroom teachers will continue to use SEESAW to inform parents of teaching and learning foci and upcoming events.

Science and Performing Arts classes will be conducted in classrooms only to limit movement across the school. We have allocated our specialists to teams as below:

K-2	Emma and Tatum
3-6	Rob and Elise

Learning Support Staff will also be assigned to class cohorts. This may mean that some students will be receiving support from somebody different to their usual LSA (learning support assistants). We will communicate with specific families if this impacts your child.

Band- We are waiting on further information regarding our year 5 and 6 band program. We will keep band students and parents informed.

Sing Along-Mr Tim will continue to run the whole school Sing Along on Tuesday afternoon. This will be done online to classrooms.

Library – our library will be carefully timetabled to ensure students can still access quality literature. At this stage, we will not be borrowing to take home.

<p>Break times</p>	<p>Adjustments to the playground break times have been made to ensure that each cohort has their own time on the playground. This will minimise cohort interaction. Classroom Teachers from the same cohort will undertake duties.</p> <p>Kindergarten- Break 1 will at 10.15am - 11.00am on the Junior Playground Break 2 will be at 1.00pm - 1.30pm on the Junior Playground</p> <p>Year 1 and 2- Break 1 will be at 10.15am -11.00am on the Senior Playground Break 2 will be at 1.00pm - 1.30pm on the Senior Playground</p> <p>Year 3 and 4- Break 1 will at 11.00am - 11.45am on the Senior Playground Break 2 will be at 1.30pm-2.00pm on the Oval</p> <p>Year 5 and 6- Break 1 will be at 11.00am -11.45am on the Oval Break 2 will be at 1.30pm - 2.00pm on the Senior Playground</p> <p>Kindergarten and Year 1 and 2 students will use the Junior Playground toilets at break times.</p> <p>Year 3 to 6 will use the Senior Playground toilets during break time.</p> <p>The playground equipment will be wiped down with an approved disinfectant after each cohort has used it.</p> <p>We will continue to have supervised eating times within cohorts at the beginning of each break.</p>
<p>Before and After School Care</p>	<p>Before and After School Care Educators have been working for the duration of lockdown. They will continue to follow the Organisation's COVID Response Plan, as well as adhere to ACT Health requirements. Masks are mandatory, both inside and outside. Staff use the school's check-in code, use appropriate hand and respiratory health practices, as well as maintain social distancing.</p> <p>Drop off and pickup procedures include:</p> <ul style="list-style-type: none"> • Junior Students – (K-2) will continue to be dropped off and picked up at the Gym – parents are asked to not enter the building • Senior Students - (3-6) will continue to be dropped off in the morning at the Gym and picked up at the Hall. <p>Further details regarding protocols will be sent to families who access Before and After School Care.</p>
<p>Evacuation Points</p>	<p>In the unlikely event of an emergency, we will ensure that appropriate social distancing will occur when lining up in class groups out on the oval.</p>

We will continue to review and adjust these measures based on the most up to date advice from ACT Health.

Remember, all adults and children aged 12 years and above are eligible for vaccination. If your child is eligible but not yet vaccinated, we encourage you to book them in by calling the COVID-19 vaccination line on 5124 7700 daily between 7am-7pm. Bookings can also be made with some [GP clinics and pharmacies](#).

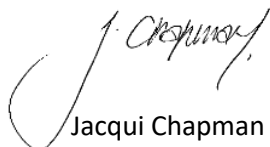
We understand that there has been considerable change and uncertainty for our students during the pandemic, and as we transition back to school. I would remind you that you and your child can book an appointment with our Telehealth Support Service on 02 6205 1559 between 9.00am and 4.30pm weekdays. With the return to school, your child will also be able to organise face to face sessions with the school psychologist.

For more information about the return to schools, I'd recommend visiting [the Education Directorate's website](#).

You can keep up to date with the latest health information, advice, and resources on the [ACT's COVID-19 website](#).

I would like to take this opportunity to thank you for your support and understanding as we have navigated the changes during Remote Learning and the return to face-to-face schooling. We thank you for your continued support and advocacy for your children, we acknowledge the amazing work you have achieved, and we look forward to seeing all our students back on site.

Kind regards,



Jacqui Chapman

Principal

Lyneham Primary School